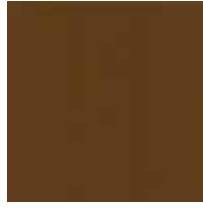




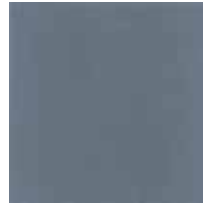
Delta 001



Delta 004



Delta 005



Delta 007



Delta 008



Delta 009



Delta 015



Delta 018



Delta 020



Delta 022



Delta 024



Delta 026



Delta 030



Delta 031



Delta 033



Delta 035



Delta 039



Delta 040



Delta 059



Delta 060



Delta 061



Delta 068



Delta 069



Delta 084



Delta 100



Delta 203



Delta 206



Delta 210



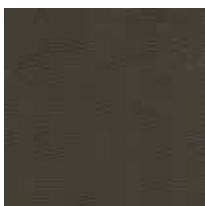
Delta 212



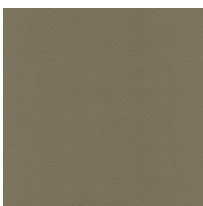
Delta 304



Delta 500



Delta 600



Delta 601



Delta 610



Delta 660








Delta 746

SPECIFICATIONS/SPÉCIFICATIONS

Width/Largeur	54"/137 cm
Contents/Composition	100% Polyvinyl Chloride (PVC)/ Polychlorure de vinyle (PVC)
Weight/Poids	23 oz/linear yard/ oz/verge linéaire
Repeat/Répétition	N/A
Backing Contents/Composition du support	10% Laminated Polyester/ Polyester laminé

PERFORMANCE

 Breaking Strength/Résistance à la rupture ASTM D5034	Warp/Chaîne: 89 lbs Fill/trame: 93 lbs
 Colorfastness to Light/Résistance à la lumière AATCC 16 (40 hours/heures)	4.5
 Colorfastness to Crocking/Résistance au dé.gorgement AATCC 8	Wet/Humide: 5 Dry/Sec: 5
 Abrasion Resistance/Résistance à l'abrasion ASTM D4157	250,000 Double Rubs/ Doubles frottements
 Flammability/Inflammabilité CAL 17 Section E	Passed/Conforme
UFAC	Class/Classe 1
NFPA 260	Passed/Conforme
ISO 1419: 1995, Method C: Tropical test (Hydrolysis testing)	Passed/Conforme
ASTM D2097-03(Flex testing)	Passed/Conforme
Cleaning Code/Code de nettoyage	W

*Slight color variation between dye lots may occur./La couleur peut varier légèrement entre chaque lot de teinture.