



Archetype Admiral



Archetype Anchor



Archetype Blackberry



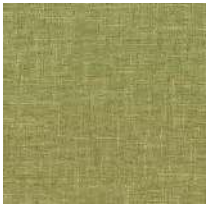
Archetype Bourbon



Archetype Cafe



Archetype Hemp



Archetype Herbal



Archetype Quartz



Archetype Slit



Archetype Smoke



Archetype Vermillion



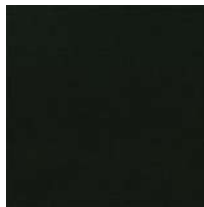
Dorset Ash



Dorset Avocado



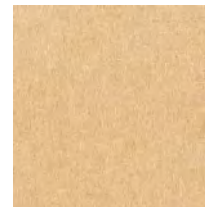
Dorset Balsa



Dorset Black



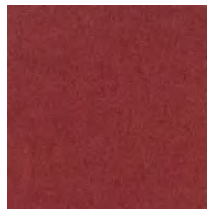
Dorset Blueberry



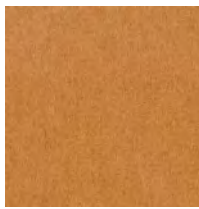
Dorset Caramel



Dorset Charcoal



Dorset Cherry



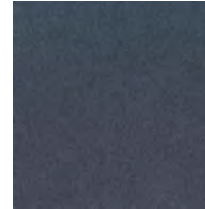
Dorset Copper



Dorset Denim



Dorset Mullberry



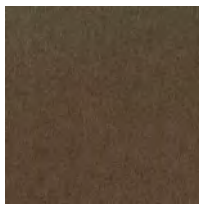
Dorset Navy



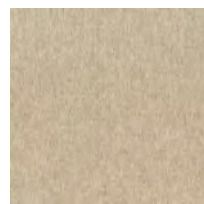
Dorset Oceanblue



Dorset Silvergray



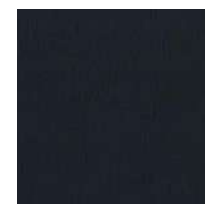
Dorset Soda



Dorset Taupe



Linette Ash



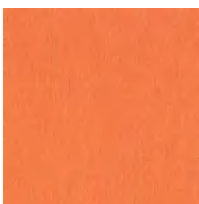
Linette Black



Linette Cola



Linette Denim



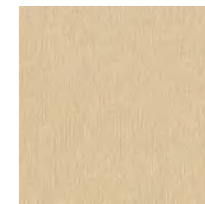
Linette Flame



Linette Frost



Linette Glacier



Linette Glaze



Linette Moss

Photographic fabric scans are not colour accurate. Always request actual fabric samples before ordering.



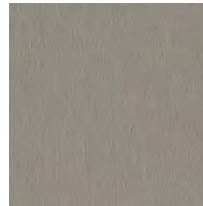
Linette Mustard



Linette Peacock



Linette Platinum



Linette Steel



Linette Stone



Linette Toffee



Linette Waterscape



Purl Azure



Purl Breeze



Purl Dark Blue



Purl Hearthston



Purl Icicle



Purl Jade



Purl Root



Purl Shadow



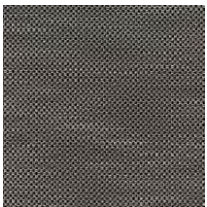
Purl Spice



Purl Steel Wool



Purl Steam



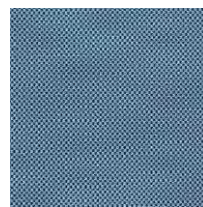
Tome Charcoal



Tome Forge



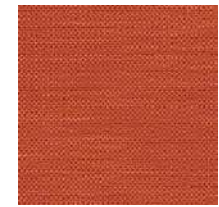
Tome Heirloom



Tome Jewel



Tome Pool



Tome Poppy



Tome Pueblo



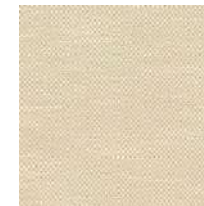
Tome Sapphire



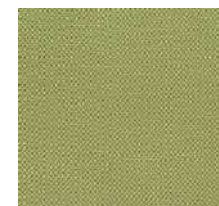
Tome Scarlet



Tome Sepia



Time Sisal



Tome Sorrel



Tome Sugarplum



Tome Sundance



Tome Walnut

Photographic fabric scans are not colour accurate. Always request actual fabric samples before ordering.

Dorset

Content:	100% Polyester
Backing:	100% Polyester
Finish:	i-clean
Weight:	17.3 oz. per linear yard
Width:	54"
Abrasion:	Heavy Duty - Exceeds 55,000 Cycles (Wyzenbeek - #10 Cotton Duck Abradant) (ASTM D4157)
Light Fastness:	Class 4/40 hrs. min. (AATCC16A)
Color Fastness:	Class 3 (ASTM D3597, AATCC 8) Wet Class 4 (ASTM D3597, AATCC 8) Dry
Physical Properties:	Class 4 (ASTM D3511) Brush Pill 266 lbs. warp, 130 lbs. weft (ASTM D5034) Breaking Strength 41 lbs. warp, 38 lbs. weft (ASTM D4034) Seam Slippage
Passes:	California Tech. Bulletin #117-2013 UFAC Class I NFPA 260 Class I
Cleanability:	W --Water based cleaners may be used.

This fabric is made in China.

Archetype

Content:	79% Polyester, 21% Rayon
Backing:	100% Polyester
Finish:	i-clean, a high performance nano technology
Weight:	9.0 oz. per linear yard
Width:	54"
Abrasion:	Heavy Duty - Exceeds 70,000 Cycles (Wyzenbeek - #10 Cotton Duck Abradant) (ASTM D4157)
Light Fastness:	Class 4/40 hrs. min. (AATCC I6A)
Color Fastness:	Class 3 (ASTM D 3597, AATCC 8) Wet Class 4 (ASTM D 3597, AATCC 8) Dry
Physical Properties:	Class 3 (ASTM D3511) Brush Pill 152 lbs. warp, 116 lbs. weft (ASTM D 5034) Breaking Strength 52 lbs. warp, 55 lbs. weft (ASTM D 4034) Seam Slippage
Passes:	California Tech. Bulletin #117-2013 UFAC Class I NFPA 260 Class I
Cleanability:	W - Water based cleaners may be used

This fabric is made in China.

Samples are Railroaded


K E C A
I N T E R N A T I O N A L