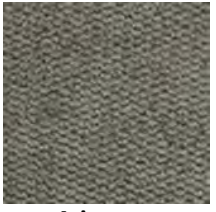




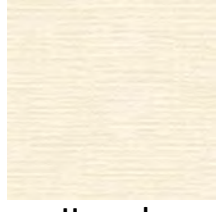
Aristocrat
805-Stone



Aristocrat
8004-Truffle



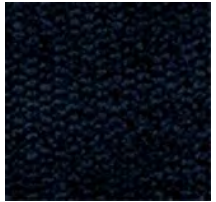
Aristocrat
97-Pewter



Heavenly
601 Oyster



Heavenly
8003-Wheat



Aristocrat
308-Navy



Heavenly
97-Cinder



Heavenly
81-Chrome



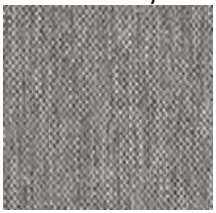
Foundation
608-Linen



Foundation
67-Fawn



Foundation
8009-Coffee



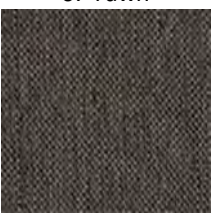
Foundation
905-Wind Chime



Heavenly
92-Pewter



Heavenly
902-Pearl



Foundation
908-Mud



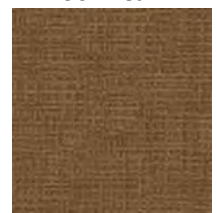
Foundation
808-Beaver



Foundation
9003-Steel



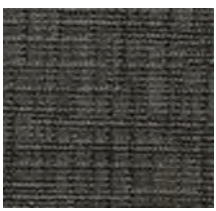
Heavenly
30 Robin's Egg



Heavenly
806-Cognac



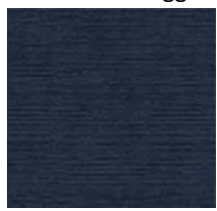
Heavenly
17-Mulberry



Heavenly
99-Mineral



Heavenly
8009-Espresso



Heavenly
309-Naval



Heavenly
9008-Java



Heavenly
8004-Mocha



Heavenly
9009-Caviar



Heavenly
3009-Midnight



Heavenly
903-Slate



Jeffery
3006-Denim Blue



Jeffery
9006-Battleship Grey



Jeffery
602-Cornsilk



Jeffery
708-Flattery



Jeffery
9003-Gainsboro



Jeffery
67-Cosmic Latte



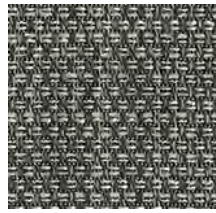
Jeffery
608-Beige



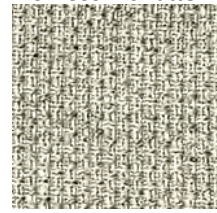
Louis
31-Crashing Blue



Louis
7003-Blue Wash



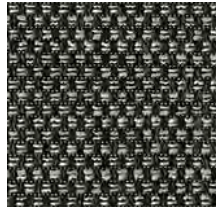
Louis
93-Wind



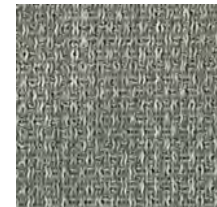
Louis
902 Gainsboro



Louis
608-Old Lace



Louis
908-Dominos



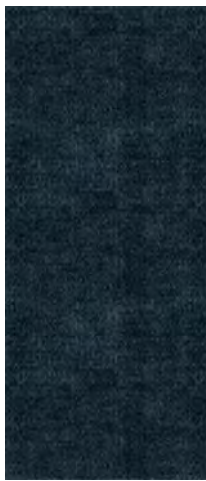
Louis
9003-Dim Grey



Louis
41-Apricot



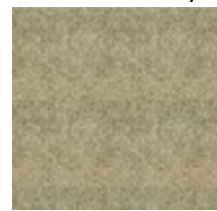
Tiffany
31-Storm



Royal
308-Midnight Blue



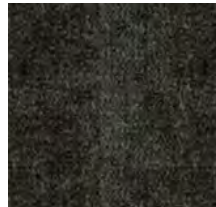
Tiffany
37-Ink



Royal
84-Pewter



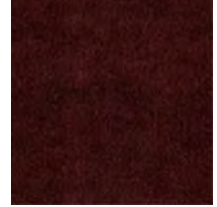
Royal
6003-Linen



Royal
90-Charcoal



Tiffany
91-Stone



Royal
108-Red-Wine

ENDUREPEL™ FUNDAMENTALS

Horizon



SPECIFICATIONS / SPÉCIFICATIONS

PATTERN NAME / NOM DE DESSIN	ARISTOCRAT	DUEL	HEAVENLY	JEFFERY	LOFT	LOUIS	ROYAL	SABI	TIFFANY
CONTENT / COMPOSITION	100% Polyester	65% Polyester, 35% Viscose	100% Polyester	100% Polyester	100% Polyester	100% Polyester	100% Polyester	100% Polyester	100% Polyester
ABRASION / RÉSISTANCE À L'ABRASION	Exceeds 80,000 Double Rubs / Excède 80 000 double frotte- ments	Exceeds 365,000** Double Rubs / Excède 365 000** double frotte- ments	Exceeds 125,000** Double Rubs / Excède 125 000** double frotte- ments	Exceeds 80,000 Double Rubs / Excède 80 000 double frotte- ments	Exceeds 100,000** Double Rubs / Excède 100 000** double frotte- ments	Exceeds 440,000** Double Rubs / Excède 440 000** double frotte- ments	Exceeds 28,000 Double Rubs / Excède 28 000 double frotte- ments	Exceeds 315,000** Double Rubs / Excède 315 000** double frotte- ments	Exceeds 100,000** Double Rubs / Excède 100 000** double frotte- ments
COLORS / COULEURS	4	3	17	7	10	11	5	2	3
CROCKING / DÉGORGEMENT	AATCC 8: Dry (Sec) = Class(e) 4,5, Wet (Mouillé) = Class(e) 4	AATCC 8: Dry (Sec) = Class(e) 5, Wet (Mouillé) = Class(e) 5	AATCC 8: Dry (Sec) = Class(e) 4,5, Wet (Mouillé) = Class(e) 4,5	AATCC 8: Dry (Sec) = Class(e) 5, Wet (Mouillé) = Class(e) 5	AATCC 8: Dry (Sec) = Class(e) 4,5, Wet (Mouillé) = Class(e) 4,5	AATCC 8: Dry (Sec) = Class(e) 4,5, Wet (Mouillé) = Class(e) 5	AATCC 8: Dry (Sec) = Class(e) 4,5, Wet (Mouillé) = Class(e) 4	N/A	AATCC 8: Dry (Sec) = Class(e) 4,5, Wet (Mouillé) = Class(e) 5
FIRE RETARDANCY** / RÉSISTANCE AUX FEU**	MVSS302, NFPA 260 Class(e) 1, UFAC Class(e) 1	CALTB117-2013, NFPA 260 Class(e) 1, UFAC Class(e) 1	CALTB117-2013, NFPA 260 Class(e) 1, UFAC Class(e) 1	CALTB117-2013, NFPA 260 Class(e) 1, MVSS 302, UFAC Class(e) 1	CALTB117-2013, NFPA 260 Class(e) 1, UFAC Class(e) 1	CALTB117-2013, NFPA 260 Class(e) 1, UFAC Class(e) 1	CALTB117-2013, NFPA 260 Class(e) 1, UFAC Class(e) 1	CALTB117-2013, NFPA 260 Class(e) 1, UFAC Class(e) 1	CALTB117-2013, NFPA 260 Class(e) 1, UFAC Class(e) 1
PILLING / BOULCAGE	ASTM D3511: Class(e) 5	ASTM D3511: Class(e) 3	ASTM D3511: Class(e) 4,5	ASTM D3511: Class(e) 5	ASTM D3511: Class(e) 4	ASTM D3512: Class(e) 5	ASTM D3511: Class(e) 4,5	N/A	ASTM D3511: Class(e) 4,5
RAILROADED / DIRECTION DU TISSU	No / Non	No / Non	No / Non	No / Non	No / Non	Yes / Oui	No / Non	No / Non	Yes / Oui
SEAM SLIPPAGE / GLISSEMENT DE LA COUTURE	ASTM D4034: Warp (chaîne) = 83 lbs., Fill (trame) = 69 lbs.	ASTM D4034: Warp (chaîne) = 101 lbs., Fill (trame) = 123 lbs.	ASTM D4034: Warp (chaîne) = 108 lbs., Fill (trame) = 121 lbs.	ASTM D434: Warp (chaîne) = 65 lbs., Fill (trame) = 65 lbs.	ASTM D4034: Warp (chaîne) = 28 lbs., Fill (trame) = 118 lbs.	ASTM D434: Warp (chaîne) = 88 lbs., Fill (trame) = 34 lbs.	ASTM D4034: Warp (chaîne) = 32 lbs., Fill (trame) = 79 lbs.	ASTM D4034: Warp (chaîne) = 46 lbs., Fill (trame) = 106 lbs.	ASTM D434: Warp (chaîne) = 124 lbs., Fill (trame) = 52 lbs.
TEAR STRENGTH / RÉSISTANCE À LA DÉCHIRURE	ASTM D2261: Warp (chaîne) = 13 lbs., Fill (trame) = 6 lbs.	ASTM D2261: Warp (chaîne) = 63 lbs., Fill (trame) = 30 lbs.	ASTM D2261: Warp (chaîne) = 36 lbs., Fill (trame) = 24 lbs.	N/A	ASTM D2261: Warp (chaîne) = 21 lbs., Fill (trame) = 16 lbs.	ASTM D1424: Warp (chaîne) = 54 lbs., Fill (trame) = 33 lbs.	ASTM D2261: Warp (chaîne) = 15 lbs., Fill (trame) = 20 lbs.	N/A	ASTM D2261: Warp (chaîne) = 27 lbs., Fill (trame) = 35 lbs.
TENSILE STRENGTH/ RÉSISTANCE À LA TRACTION	ASTM D5034: Warp (chaîne) = 126 lbs., Fill (trame) = 122 lbs.	ASTM D5034: Warp (chaîne) = 237 lbs., Fill (trame) = 251 lbs.	ASTM D5034: Warp (chaîne) = 335 lbs., Fill (trame) = 168 lbs.	ASTM D5034: Warp (chaîne) = 322 lbs., Fill (trame) = 218 lbs.	ASTM D5034: Warp (chaîne) = 137 lbs., Fill (trame) = 96 lbs.	ASTM D5034: Warp (chaîne) = 407 lbs., Fill (trame) = 180 lbs.	ASTM D5034: Warp (chaîne) = 152 lbs., Fill (trame) = 128 lbs.	ASTM D5034: Warp (chaîne) = 301 lbs., Fill (trame) = 156 lbs.	N/A
UV/LIGHTFASTNESS / RÉSISTANCE AUX RAYONS DE LUMIÈRE	AATCC 16: Class(e) 3	AATCC 16: Class(e) 5	AATCC 16: Class(e) 3,5	AATCC 16: Class(e) 4,5	N/A	AATCC 16: Class(e) 4,5	N/A	N/A	AATCC 16: Class(e) 5
WEIGHT / POIDS	11.71 oz./lin yd (vg); 7.67 oz./yd² (vg²)	21.24 oz./lin yd (vg); 14.16 oz./yd² (vg²)	13.34 oz./lin yd (vg); 8.73 oz./yd² (vg²)	18.83 oz./lin yd (vg); 11.89 oz./ yd² (vg²)	10.36 oz./lin yd (vg); 6.78 oz./yd² (vg²)	18.47 oz./lin yd (vg); 12.09 oz./ yd² (vg²)	13.58 oz./lin yd (vg); 8.43 oz./yd² (vg²)	16.71 oz./lin yd (vg); 10.91 oz./ yd² (vg²)	13.31 oz./lin yd (vg); 8.4 oz./yd² (vg²)
WIDTH / LARGEUR	55" (140 cm)	56" (142 cm)	55" (140 cm)	56.75" (144.15 cm)	55" (140 cm)	56" (142 cm)	57" (144.78 cm)	55" (140 cm)	57" (144.78 cm)
ROLL SIZE / TAILLE DU ROULEAU	55 yards (50.2 m)	50 yards (45.7 m)	40 yards (36.5 m)	50 yards (45.7 m)	55 yards (50.2 m)	50 yards (45.7 m)	50 yards (45.7 m)	50 yards (45.7 m)	50 yards (45.7 m)

*This term and any corresponding data refer to typical performance in the specific tests indicated and should not be construed to imply the behavior of this or any other material under actual fire conditions. **This information is offered for your general guidance only. It's accurate to the best of our knowledge and is not intended to relieve the user from their responsibility to investigate and understand other pertinent sources of information and to comply with all laws and procedures applicable to the sale, handling and use of this material.

**The results above 100,000 double rubs have not been shown to be an indicator of increased lifespan.

Les résultats rapportés d'après la norme ci-dessus ne définissent pas nécessairement les risques que représente ce matériau dans des conditions réelles d'incendie. ** Ces renseignements sont offerts à titre consultatif seulement. Ils sont précis, au mieux, dans les conditions ci-dessus et ne sont pas destinés à décharger l'utilisateur de sa responsabilité d'évaluer et de comprendre les autres sources pertinentes de renseignements, ni de se conformer à toutes les lois et procédures relatives à la manipulation et à l'utilisation saines et sûres de ce matériau. La décision finale du type d'application du produit appartient à l'utilisateur.

**Les doubles frottements supérieurs à 100 000 ne sont pas un indicateur d'une durée de vie accrue pour un produit.



ENDFUNBC
0817

KECA
INTERNATIONAL

ENNIS
FABRICS

CANADA ENGLISH 800.663.6647 • FRANÇAIS 888.663.6647
USA 877.953.6647
FAX 888.274.2910

JENNISFABRICS.COM