



Nassau KL-024



Aqua KL-023



Aegean KL-014



Wheat KL-012



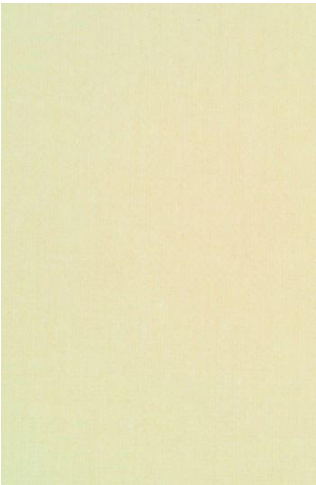
Palm KL-013



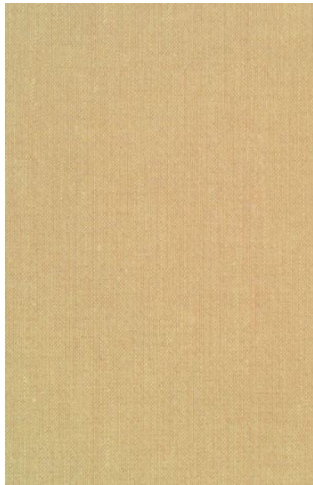
Ultramarine  
KL-004



Gold Coast KL-002



Parchment KL-007



Khaki KL-017



Pear KL-033



Raspberry KL-011



Jonquil KL-022



Jungle KL-003



Magenta KL-008



Tangerine KL-009



Quarry KL-026



Graphite KL-006



Toast KL-010



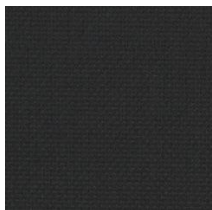
Sandstone KL-020



Crocus KL-015



Cayenne KL-019



Ebony KL-016



Chocolate KL-000



Sand KL-027



Violet KL-005



Crimson KL-001

# KEY LARGO

## CATEGORY

Seating

## PROPERTIES



## CONTENT

86% Vinyl Phthalate Free face 14% Polyester backing

## BACKING

100% Polyester Knit

## FINISH

Resilience<sup>SR</sup>

## WIDTH

54"

## WEIGHT

28 oz./linear yard

## SHOWN RR

No

## DIR

Yes

## ROLL LENGTH

30 yards

## VISUAL REPEAT

None

## BREAKING STRENGTH

Warp 95/Fill 60

## SEAM SLIPPAGE

Warp: 45 lbs. / Fill: 45 lbs.

## ABRASION RESISTANCE

Exceeds 250,000 Double Rubs (Wyzenbeek)

Multiple factors affect fabric durability and appearance retention, including end-user application and proper maintenance. Wyzenbeek results above 100,000 double rubs have not been shown to be an indicator of increased lifespan.

## PILLING RESISTANCE

Class N/A

## COLORFASTNESS TO CROCKING

Dry: Class 4 min/Wet: Class 4 mi

## COLORFASTNESS TO LIGHT

650 hours

## APPLICATION

Atrium, Indoor, Marine, Outdoor

## FLAMMABILITY

Passes Cal 117-2013; NFPA 260/UFAC Class 1; BIFMA; FMVSS 302; IMO FTP 2010 Code MSC.307(88), Part 8, 3.1 & 3.2; May comply with Cal. Tech. Bul. 133 when combined with appropriate components.

## CLEANING

**WS: Water/Solvent Cleaner** - Spot clean with a mild solvent, an upholstery shampoo, or the foam from a mild detergent. When using a solvent or dry cleaning product, follow instructions carefully and clean only in a well-ventilated room. Avoid any product that contains carbon tetrachloride or other toxic materials. With either method, pretest a small area before proceeding. Always rinse promptly with clean water.

**BC: Bleach Cleanable** - 1 part bleach, 9 parts water = 10% bleach, 90% water solution. Do not clean/disinfect fabric for longer than 10 minutes using the 10% bleach solution. Always rinse promptly with clean water after applying the bleach solution. Failure to do so will void any and all warranties.

**Resilience<sup>SR</sup>**  
ENDURING PROTECTION

**GREENGUARD**  
Certified

© Mayer Fabrics 2018

Specifications are subject to change. Current specifications are available at [mayerfabrics.com](http://mayerfabrics.com)  
Mayer Fabrics | 500 S. Kitley Ave, Indianapolis, IN 46219

**KECA**  
INTERNATIONAL

